

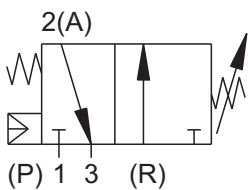
## RANGE SELECTION TABLE

| Range Code | Range bar (psi)                | Differential* bar (psi)   | Maximum Working Pressure bar (psi) |
|------------|--------------------------------|---|------------------------------------|
|            |                                | Applicable for SPDT valve   |                                    |
| H01        | 0.1 - 1.0<br>(1.45 - 14.50)    | *Differential is infinitely variable upto range. Please consult sales office for further details. | 12<br>(174.05)                     |
| H02        | 0.1 - 1.5<br>(1.45 - 21.76)    |   | 12<br>(174.05)                     |
| H03        | 0.2 - 2.6<br>(2.90 - 37.71)    |   | 12<br>(174.05)                     |
| H04        | 0.2 - 3.6<br>(2.90 - 52.21)    |   | 12<br>(174.05)                     |
| H07        | 0.5 - 7.0<br>(7.25 - 101.50)   |   | 12<br>(174.05)                     |
| H10        | 0.5 - 10.0<br>(7.25 - 145.04)  |   | 25<br>(362.6)                      |
| H15        | 1.0 - 15.0<br>(14.50 - 217.56) |   | 25<br>(362.6)                      |
| H30        | 5.0 - 25.0<br>(72.52 - 362.6)  |   | 35<br>(507.63)                     |

\*Not available in Neoprene and Teflon diaphragm.

†Range not available in SS316 L diaphragm.

### Pneumatic valve specifications



NO = Normally Open  
 NC = Normally Closed  
 C = Common

Supply pressure of air/inert gas = min. 2 and max. 7 bar